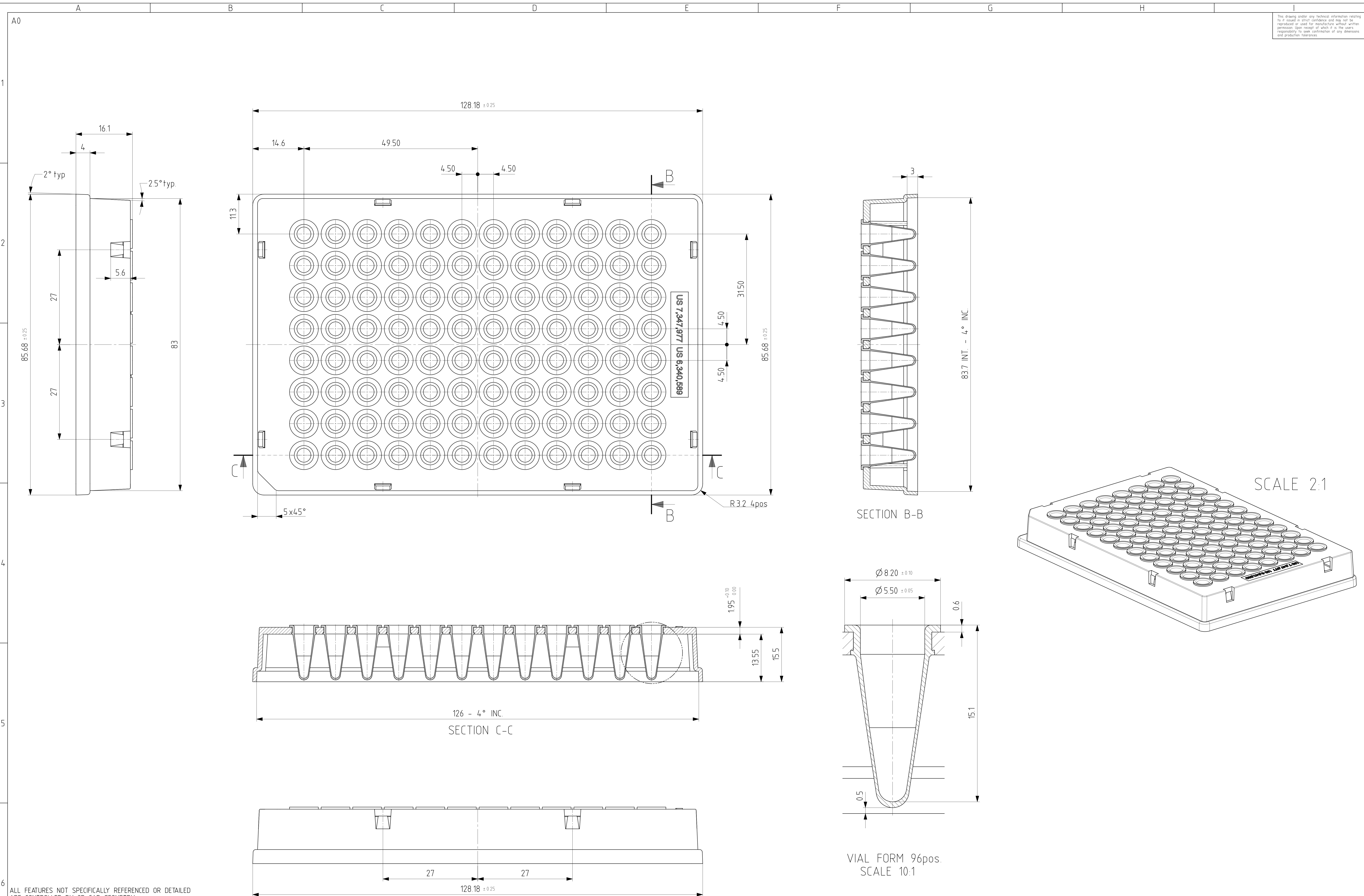


This drawing and/or any technical information relating to it is issued in strict confidence and may not be reproduced or used for manufacture without written permission. Upon receipt of which it is the user's responsibility to seek confirmation of any dimensions and production tolerances.



SCALE 2:1

SECTION B-B

SECTION C-C

VIAL FORM 96pos
SCALE 10:1

ALL FEATURES NOT SPECIFICALLY REFERENCED OR DETAILED ARE CONTROLLED BY 3D CAD GEOMETRY.

ISSUE	DATE	AMENDMENT	ISSUE	DATE	AMENDMENT
A	25.02.2020	Original marketing drawing prepared based on the 4TI-0960/RIG-INTF_issue_A technical drawing			



 SCALE 3:1	CUSTOMER	Zoltan Erdelyi	TITLE	FrameStar 96 Well Skirted PCR Plate (Rigid frame) MARKETING DRAWING
	CUSTOMER DRG. No.		DATE	25.02.2020
	MATERIAL	Frame: glass filled polycarbonate Tubes: polypropylene	CHECKED & APPROVED	Paresh Patel
	TOLERANCES	0 ±0.25 0.0 ±0.20 0.00 ±0.10 ANGULAR ±0.30° (ALL DIMENSIONS IN MILLIMETRES)	DATE	
	GENERAL TOLERANCES (UNLESS OTHERWISE STATED)		Brooks WDT tool numbers	
			DRAWING No.	4TI-0960/RIG-INTF#MARKETING
			SHEET No.	1 OF 1
			ISSUE	A