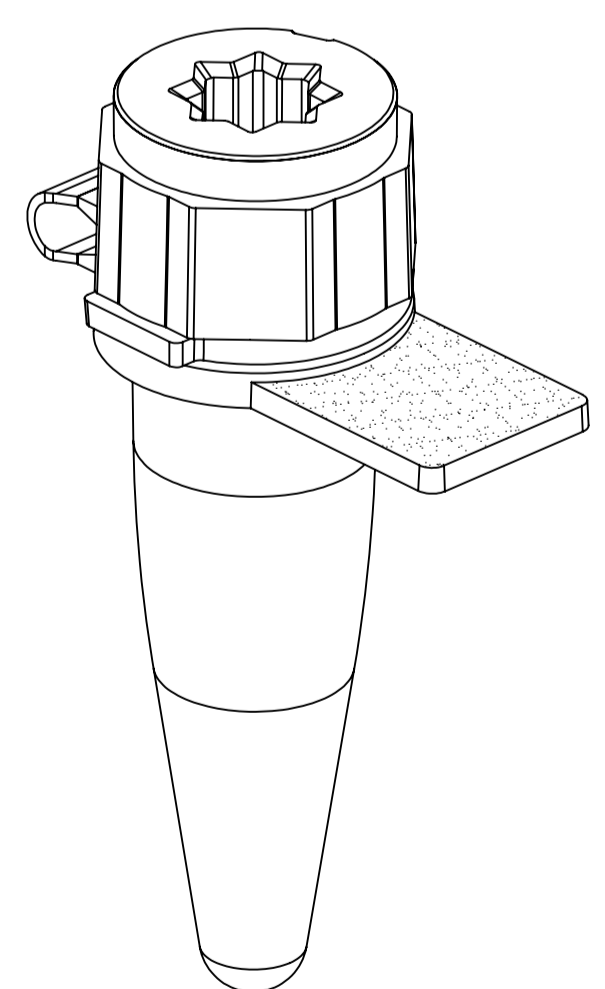
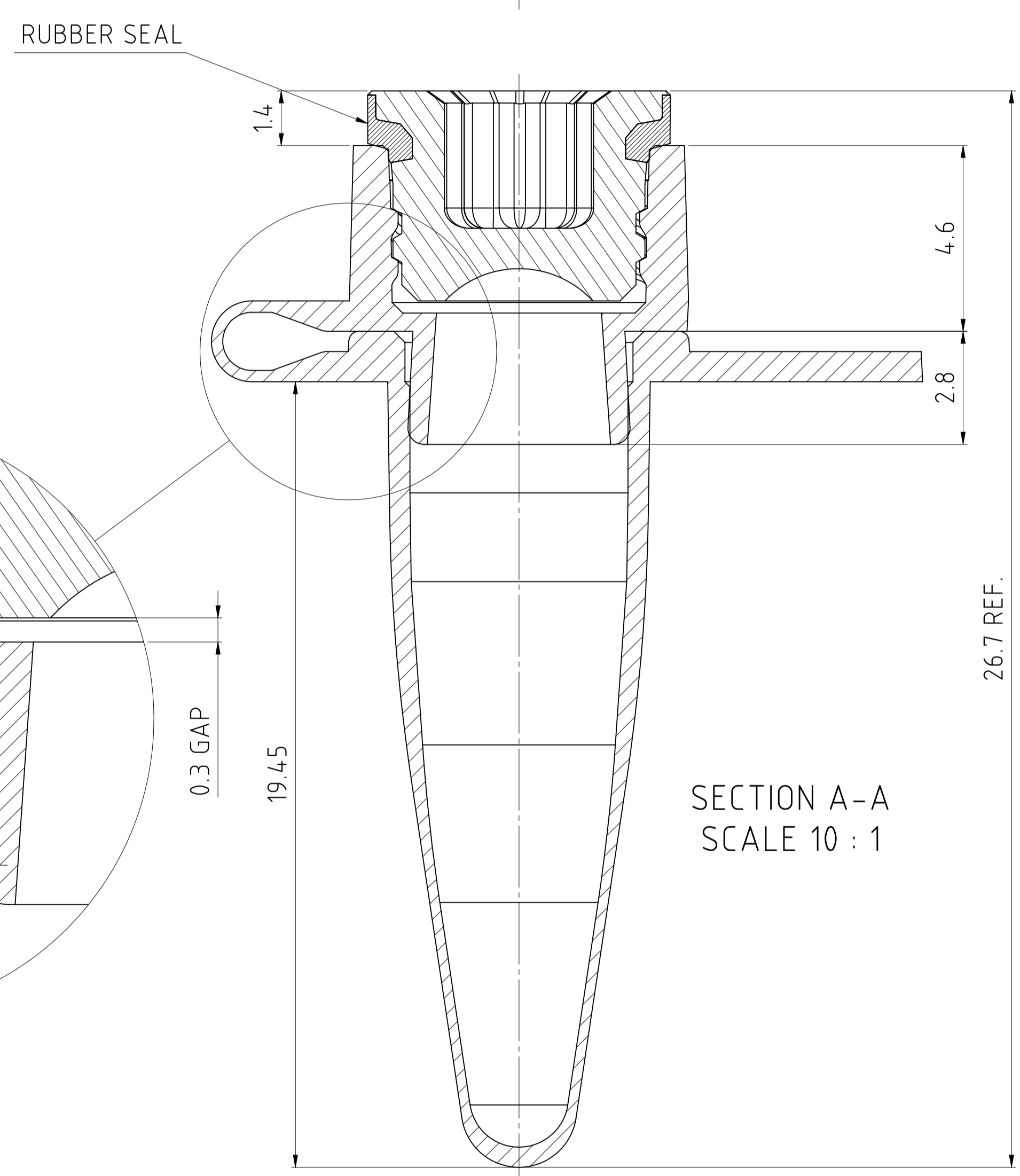
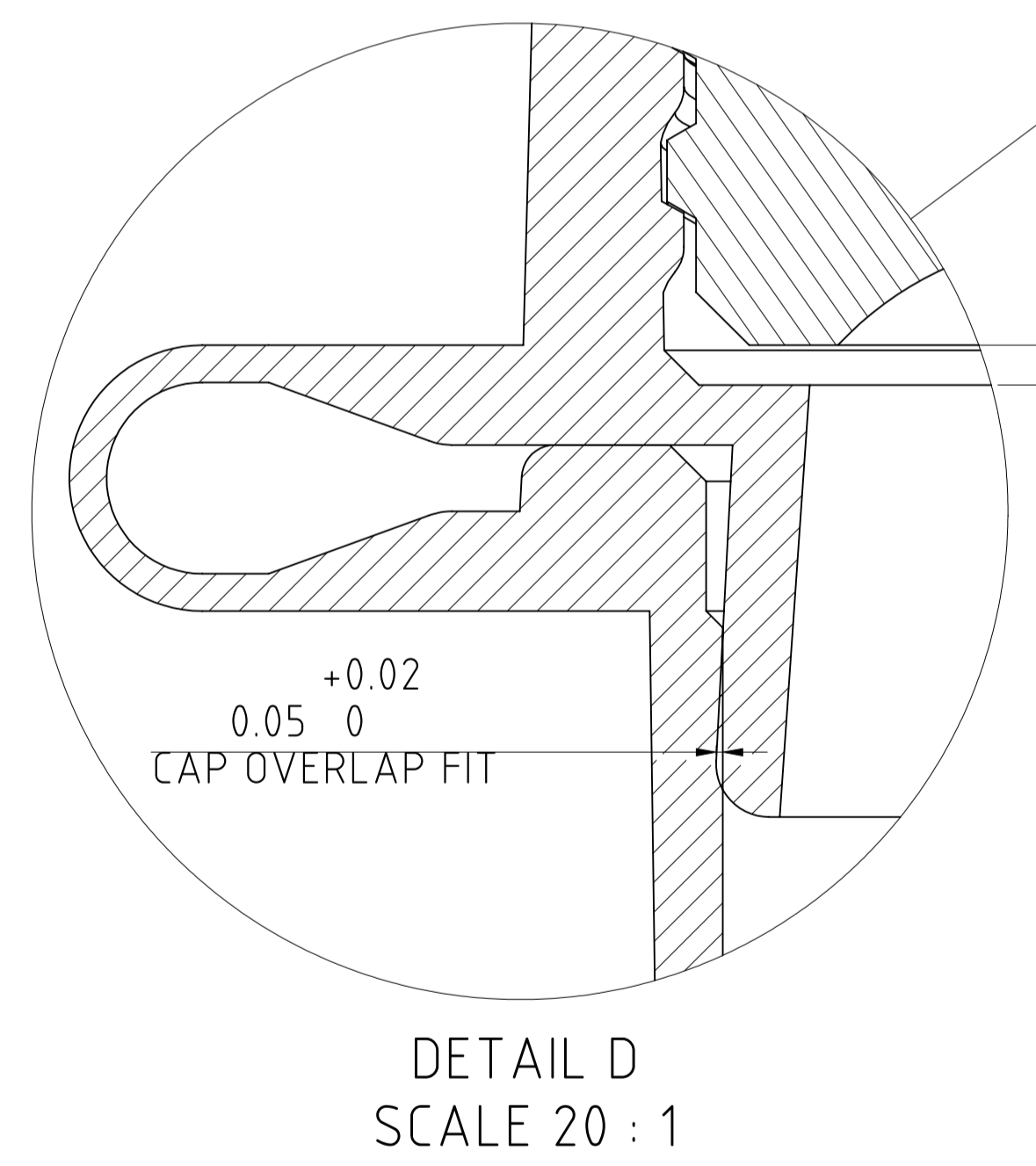
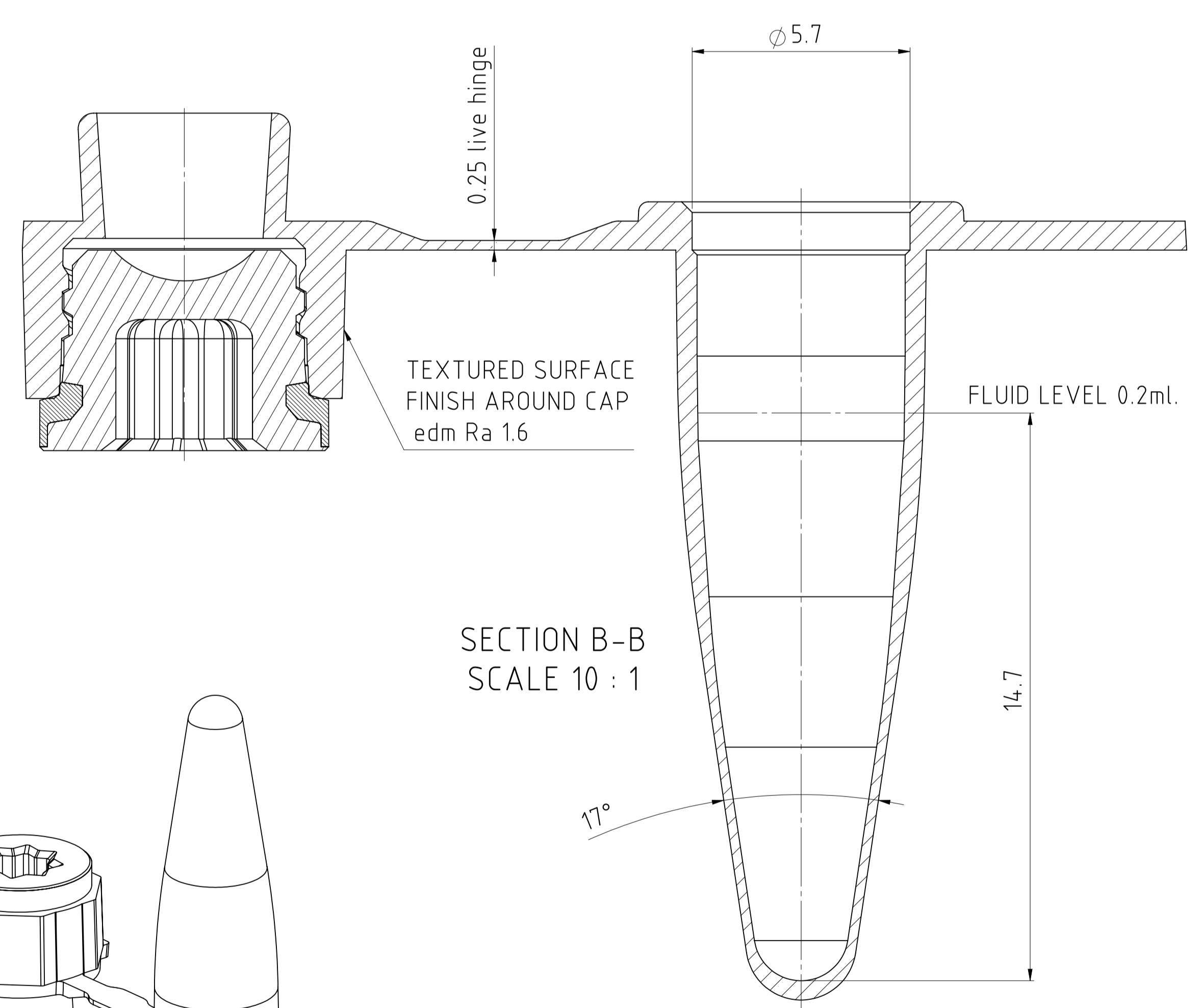
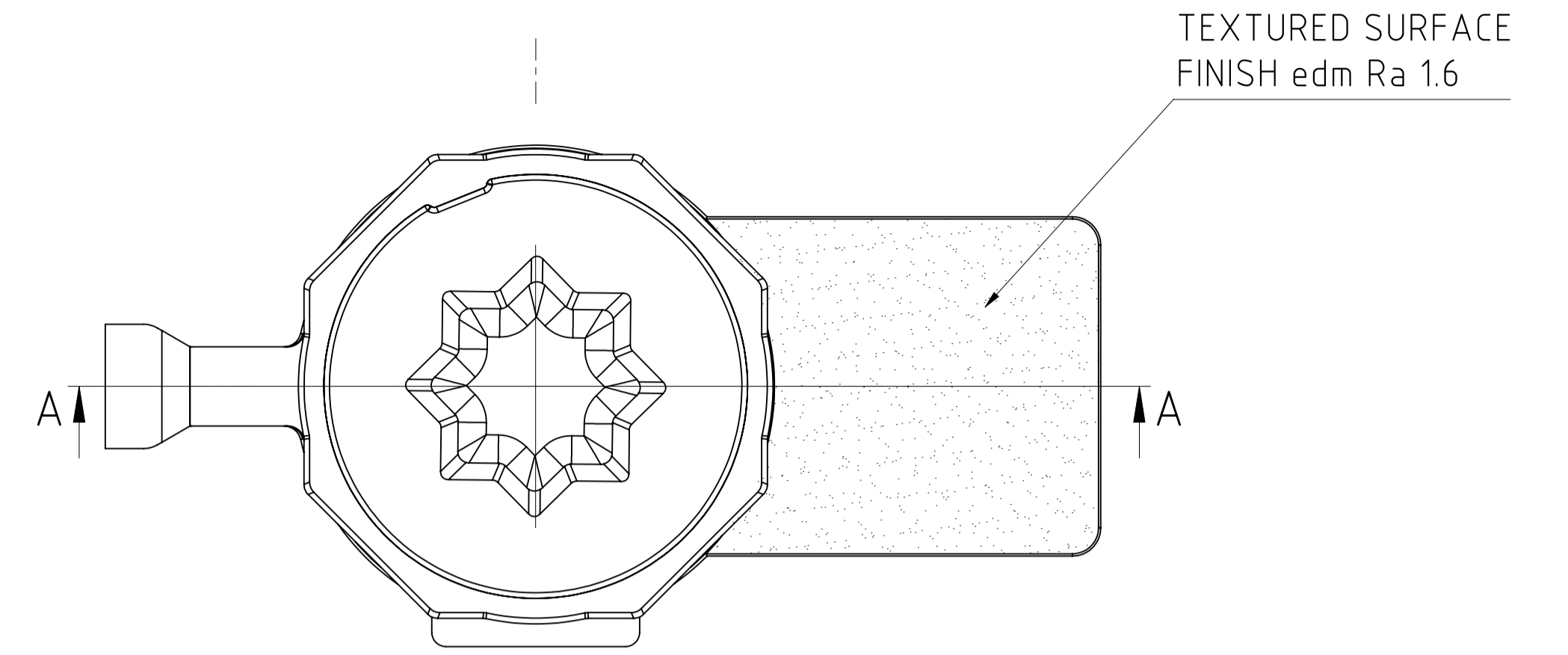
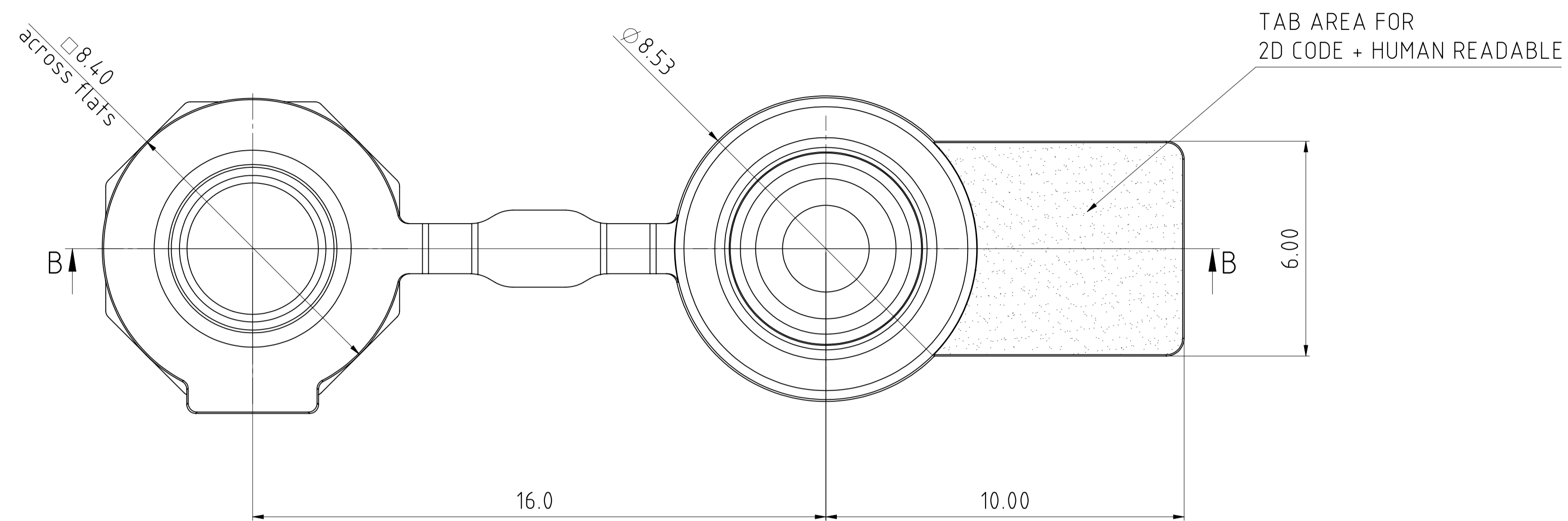


This drawing and/or any technical information relating to it issued in strict confidence and may not be reproduced or used for manufacture without written permission. Upon receipt of which it is the users responsibility to seek confirmation of any dimensions and production tolerances.

OPEN WITH ACOUSTIC CAP FITTED

CLOSED WITH ACOUSTIC CAP FITTED



- NOTE:
1. ALL FACES TO BE HIGH POLISHED FINISH SPI A2 UNLESS STATED OTHERWISE
  2. UNDIMENSIONED FEATURES USE 3D MODEL
  3. PART SHALL BE MANUFACTURED IN COMPLIANCE WITH BAI FABRICATED PART SUBSTANCE COMPLIANCE REQUIREMENTS DOCUMENT 147301

ISSUE	DATE	AMENDMENT



DO NOT SCALE IF IN DOUBT ASK	CUSTOMER:	SIGNATURE:	DRAWN: S.HOLMES
	CUSTOMER DRG. No.:	ISSUE:	DATE: 16 March 2023
	MATERIAL: POLYPROPYLENE	CHECKED BY: T.BROWN	DATE: 14 June 2023
	TOLERANCES:	SCALE:	
	GENERAL TOLERANCES (UNLESS OTHERWISE STATED)	ANGULAR (ALL DIMENSIONS IN MILLIMETRES)	

TITLE: 0.2ml Dual-Cap PCR Tube, Clear PP, attached fip cap with orange screw cap, 2D code + Human readable No. tab, for sample collection
DRAWING No.: 4ti-0791
SHEET No.: 1 of 1
ISSUE: A