

STRATA SAMPLE MANAGEMENT SOFTWARE ENHANCEMENT PACKAGES

Introduction

Strata™ software is the high-performance engine that drives the sample management process in Azenta Life Sciences SampleStore™ and BioStore™ automated storage systems.

Our enhancement packages are available to new and existing users, in order to advance the management of biosamples and compounds within SampleStore and BioStore automated storage systems.



Enhancement Packages

- Throughput and workflow enhancement
- Storage optimization
- Advanced storage management
- BioStore sample management

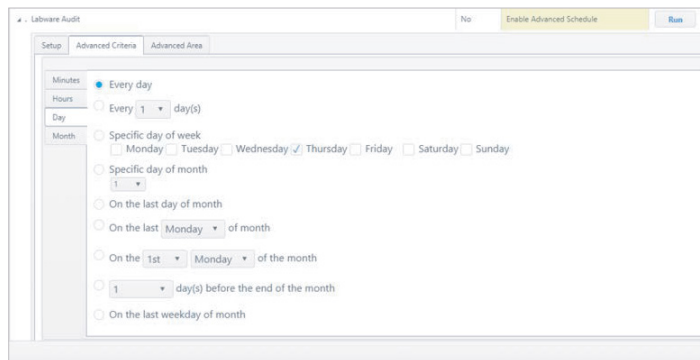
Package	Features	Description
EP1: Throughput and Workflow Enhancement	Single order throughput predictor	Planning tool to calculate completion time of simple orders
	Array picking optimization	Consolidation of orders at rack/plate level, minimizing required rack/plate and consolidation of output trays
	Store load vs. remove bias switch	Simplifies store management for users who want to quickly change the bias between loading samples and removing them
	Single order picker spanning	For multi-picker systems, orders span across multiple pickers to increase throughput and order efficiency
	Direct load (loading tray without imager)	For mass migration or loading of samples, the focus is sample temperature stabilization (no imaging step)
	Load & go	Samples that have been loaded in the store are immediately available for retrieval
	Combining LIMS orders selected by user	Small LIMS orders (typically < 96 tubes each) can be selected together by the user resulting in fewer tray exchanges leading to higher throughput
	LIMS labware trash	Any retrieved samples that are flagged by the LIMS as unwanted or expired samples, that are then reloaded back into the store will be marked as an error

Started	Finished	Summary
26/01/2021 22:22:06	26/01/2021 22:24:31	1/1
26/01/2021 22:22:02	26/01/2021 22:23:52	1/1

Store load vs. remove bias switch:
Quickly change the bias between loading samples and removing them

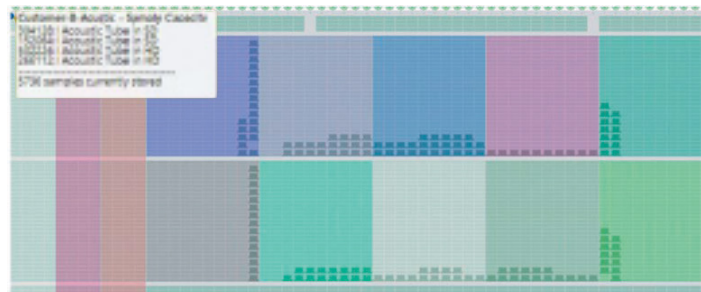
STRATA SAMPLE MANAGEMENT SOFTWARE ENHANCEMENT PACKAGES

Package	Features	Description
EP2: Advanced Storage Management	Advanced time scheduling	Simple and efficient task and order scheduling (minute, hour, day, week, month)
	Advanced physical area selection	More targeted and flexible options for labware audit / housekeeping



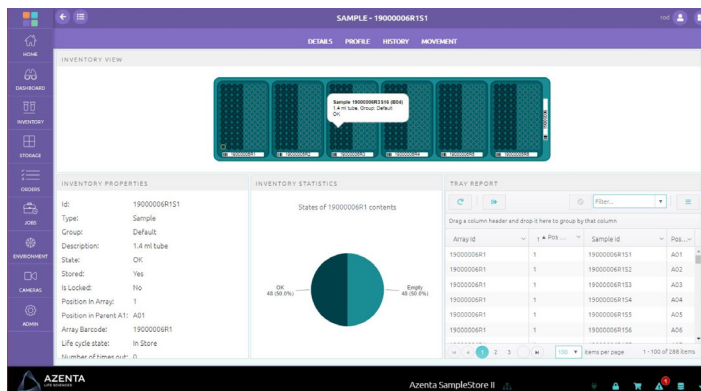
Advanced time scheduling:
Simple and efficient task and order scheduling

EP3: Storage Optimization	Physical tenancy - Advanced	Specific sample sets are organized on trays and physical locations within the system. Only sample sets allocated to specific users can be visible or accessed
	User / order partitioning	Multiple groups of sample sets/owners only have access to view their orders ensuring sample security and auditing



Physical tenancy - Advanced:
Specific sample sets are organized on trays and physical locations within the system. Only sample sets allocated to specific users can be visible or accessed

EP4: BioStore Sample Management	Staged storage loader, to prevent warm tray impacting a tray stored above	Samples are placed in an Input Area to temperature stabilize without affecting local innocent cold samples
	Sample stabilization during reformatting / output	All -20°C operations outside storage are time limited to prevent unacceptable sample warm-up (set time period -samples are placed back into storage to temperature stabilize)



User / order partitioning:
Multiple groups of sample sets/owners only have access to view their orders ensuring sample security and auditing

Minimum Requirements: Enhancement packages require a minimum of Strata v6.6 installed. Your service contact will be pleased to assist and provide further information to help you get the most from your equipment.

